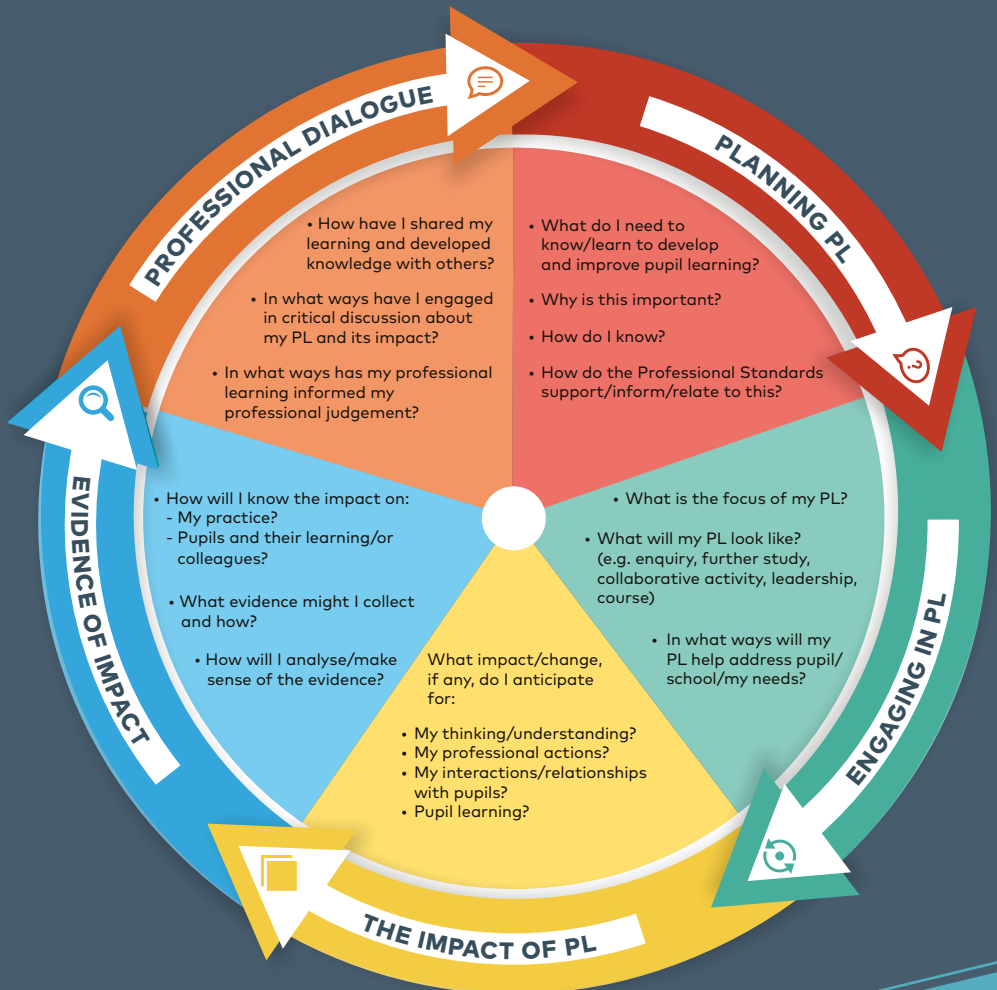


Professional learning planning cycle



Professional Update in action

The planning cycle:

- provides a scaffold to support teachers in planning and reflecting upon their professional learning
- is based on an enquiring approach to professional learning
- identifies key stages of the professional learning process.

Reflective questions:

- What is the most significant piece of professional learning you have engaged in within the last year?
- What difference did it make to your thinking and practice, your pupils, school or college?
- How do you know?